

# CROSSROAD<sup>®</sup>

**CONTROLS A VARIETY OF UNWANTED TREES, BRUSH  
AND BROADLEAF WEEDS IN NON-CROP AREAS AND  
PERMANENT GRASS PASTURES AND RANGELAND.**

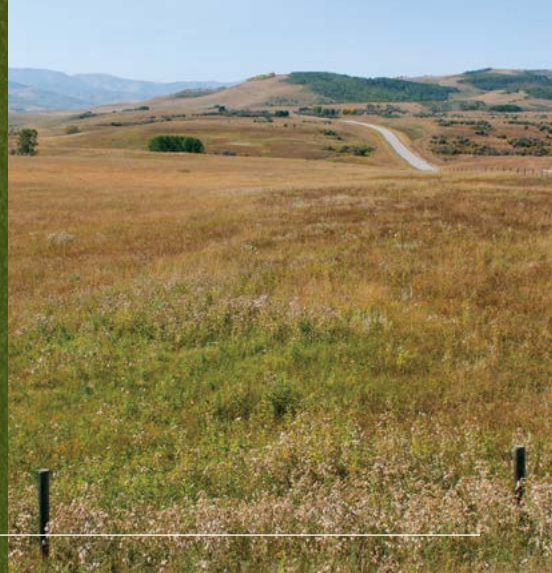
Crossroad<sup>®</sup> will control many species of woody plants, annual and perennial broadleaf weeds, growing on rangeland, permanent grass pastures, CRP, fence rows, non-irrigation ditch banks, roadsides, other non-crop areas, and industrial sites.

Crossroad mixed in water should be agitated continuously during application to prevent separation. Charge the spray tank 1/3 to 1/2 full with clean water. Add the label rate of Crossroad, then add the balance of the water with agitation running. Mix thoroughly and maintain moderate agitation while spraying.

## PRODUCT FEATURES

- Offers a low-volatile weed control solution that can be applied either by ground or through aerial application equipment.
- May be mixed with liquid nitrogen fertilizers that are suitable for broadcast application.
- Excellent choice for turf applications for the control of many annual and perennial broadleaf weeds.

See label for complete application guidelines and restrictions.



### ACTIVE INGREDIENTS

1.0 lb/gal triclopyr +  
2.0 lbs/gal 2,4-D

### HRAC GROUP

4

### FORMULATION

Emulsifiable concentrate

### REI

12 hrs

### COMPARE TO

Crossbow<sup>®</sup>

### MODE OF ACTION

Synthetic auxin

### SIGNAL WORD

Caution

### RESTRICTED USE

No

### PACKAGING

4 x 1 gal, 2 x 2.5 gal

### EPA REG NUMBER

42750-124 | AD030112



## FREQUENTLY ASKED QUESTIONS

What are the conversion rates for spot treatment and broadcast applications?

Small volume conversion for spot treatment

Size of sprayer (Gallons)	Amount of Crossroad required for spray mixture		
	1%	1.5%	4%
1	1-1/3 fl oz	2 fl oz	5-1/3 fl oz
3	4 fl oz	6 fl oz	1 pt
5	6-2/3 fl oz	10 fl oz	1-2/3 pt
50	2 qts	3 qts	2 gal
100	1 gal	1.5 gal	4 gal

Small area conversion for broadcast applications

Quarts per acre	Fluid ounces per 1,000 square feet
1	0.75
2	1.5
3	2.25
4	3.0

How should Crossroad be applied to rangeland and pasture for best results?

For broadcast treatment, apply up to 4 quarts of Crossroad per acre in sufficient water to deliver 10 to 30 gallons of total spray per acre. Actively growing weeds are most susceptible. Optimal application time for biennial and winter annual weeds is the rosette stage. Hard-to-control weeds such as field bindweed, chicory, dogfennel, goldenrod, horsenettle, kudzu, milkweed, perennial sowthistle, leafy spurge, and Canada thistle may require retreatment for complete control. *See recommendations regarding the use of drift control additives as listed in the USE PRECAUTIONS section under AVOID INJURIOUS SPRAY DRIFT (label pages 3-4).*



◀ See label for complete application guidelines and restrictions.

©2025 Albaugh, LLC. All rights reserved. Albaugh, the Albaugh logo and Crossroad are registered trademarks of Albaugh, LLC. Crossbow is a registered trademark of Corteva Agriscience. Always read and follow label restrictions, precautions and directions for use. Some products may not be registered for sale or use in all states or counties. Please check with your local extension service to ensure registration status.