

SPUR[®]

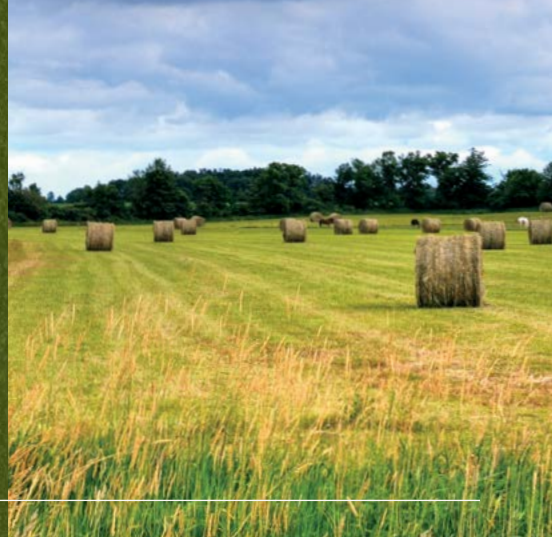
KEY COMPONENT OF MICRO-RATE TANK MIXES FOR BROAD-SPECTRUM WEED CONTROL AND REDUCTION OF FUTURE THISTLE POPULATIONS.

Spur[®] herbicide is recommended for selective, postemergence control of broadleaf weeds and select woody brush species in a range of labeled crops and applications. Apply to actively growing weeds. Extreme conditions such as drought or near-freezing temperatures prior to, at, and following time of application may reduce weed control and increase the risk of crop injury at all stages of growth. Only weeds that have emerged at the time of application will be affected. If foliage is wet at the time of application, control may be decreased. Spur is rainfast within six hours after application.

PRODUCT FEATURES

- Excellent tank-mix partner with other labeled products and a key component of micro-rate tank-mix options for broad spectrum weed control.
- Controls tough weeds, including thistles, ragweeds, common cocklebur, and nightshades.
- Labeled for use in crop, rangeland, pasture, conservation reserve program (CRP) acres, and non-crop areas including fencerows, around farm buildings, equipment pathways, industrial manufacturing, forest sites and rights-of way (such as roadsides, electrical lines, pipelines and railroads).

See label for complete application guidelines and restrictions.



ACTIVE INGREDIENT

3.0 lbs/gal clopyralid

HRAC GROUP

4

FORMULATION

Soluble concentrate

REI

12 hours

COMPARE TO

Stinger[®], Reclaim[®]

MODE OF ACTION

Synthetic auxin

SIGNAL WORD

Caution

RESTRICTED USE

No

PACKAGING

4 x 1 gal

EPA REG NUMBER

42750-89 | AD071223



FREQUENTLY ASKED QUESTIONS

How should I apply Spur herbicide for best results?

- Apply to actively growing weeds. Extreme growing conditions such as drought or near freezing temperatures prior to, at, and following application may reduce weed control and reduce the risk of crop injury at all stages of growth. Only weeds that have emerged at the time of application will be affected. If foliage is wet at the time of application, control may be reduced. Treatment with Spur is rainfast six hours after application.
- Generally, lower application rates will be satisfactory for young, succulent growth of susceptible weeds. For less sensitive species, perennials and under conditions where control is more difficult (e.g. plant stress conditions such as drought, extreme temperatures, dense weed stands and/or large weeds), the higher rates within the range will be needed.
- Weeds in fallow land or other areas where competition from crops is not present will generally require higher rates for control or suppression.

What are the recommended use rates for Spur?

Crop or use site	Rate range (pt/A)	Maximum use rate - do not exceed (pt/A/growing season)
Spinach	1/6 - 1/3	1/3
Barley, oats, wheat	1/4 - 1/3	1/3
Christmas tree and cottonwood/poplar and eucalyptus tree plantations, fallow cropland, field corn, grasses grown for seed, sugar beets	1/4 - 2/3	2/3
Garden beets, canola (rapeseed), crambe	1/4 - 1/2	1/2
Mint, stone fruits, popcorn, sweet corn	1/3 - 2/3	2/3
Turnips	1/3 - 1/2	1/2
Permanent grasses on CRP land, non-cropland, non-leguminous trees, rangeland and permanent grass pastures	1/3 - 1-1/3	1-1/3
Asparagus	1/2 - 2/3	2/3



◀ See label for complete application guidelines and restrictions.

©2025 Albaugh, LLC. All rights reserved. Albaugh, the Albaugh logo and Spur are registered trademarks of Albaugh, LLC. Stinger and Reclaim are registered trademarks of Corteva Agriscience. Always read and follow label restrictions, precautions and directions for use. Some products may not be registered for sale or use in all states or counties. Please check with your local extension service to ensure registration status.