

MALIBU™ PLUS D

AMINOPYRALID STEWARDSHIP FOR LAND MANAGERS



USE PRECAUTIONS & RESTRICTIONS

- Manure and urine from animals consuming grass or hay treated with this product may contain enough aminopyralid to cause injury to sensitive broadleaf plants.
- Hay can only be used on the farm or ranch where product is applied.
- Malibu Plus D is highly active against many broadleaf plant species. DO NOT use this product on areas where loss of desirable broadleaf forage plants, including legumes, cannot be tolerated.
- Carefully read the section "Restrictions in Hay or Manure Use" of the product label. Additionally, it is mandatory to follow the "Use Precautions and Restrictions" section of the product label.

GRAZING & HAYING RESTRICTIONS

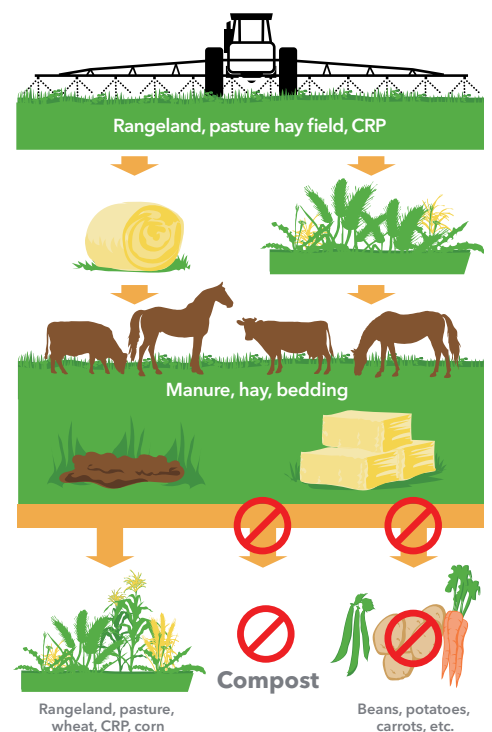
- DO NOT harvest forage for hay within 7 days of Malibu Plus D application. Cutting hay too soon after spraying weeds can compromise the weed control. Wait 14 days prior to cutting grass hay to allow for maximum herbicide activity.
- Do not sell or transport treated plant materials or manure from animals that have grazed on treated plant materials off-site for compost distribution or for use as animal bedding/feed for 18 months after application. Treated plant materials can be recycled onsite or left in the field to decompose.
- Manure from animals that have grazed or eaten forage or hay harvested from treated areas within the previous three days may only be applied to the fields where the following crops will be grown: pasture grasses, grass grown for seed, wheat and corn.
- Animals that have been fed aminopyralid-treated forage must be fed forage free of aminopyralid for at least 3 days before movement to an area where manure may be collected, or sensitive crops are grown.
- Herbicide application may increase palatability of certain poisonous plants. DO NOT graze treated areas until poisonous plants are dry and no longer palatable to livestock.

See label for complete application guidelines and restrictions.

EPA REG NUMBER

83100-78

FORAGE AND MANURE MANAGEMENT



Warning: Do not move treated plant materials or manure from animals who have grazed on treated plant materials to sites where manure may be collected or sensitive crops are grown.

MALIBU™ PLUS D

AMINOPYRALID STEWARDSHIP FOR LAND MANAGERS

HAY & MANURE USE RESTRICTIONS

- DO NOT plant a broadleaf crop (including soybeans, sunflower, tobacco, vegetables, field beans, peanuts, and potatoes) in fields treated in the previous year with manure from animals that have grazed forage or eaten hay harvested from aminopyralid-treated areas until an adequately sensitive field bioassay is conducted to determine that the aminopyralid residues in the soil is at level that is not injurious to the crop to be planted.
- To promote herbicide decomposition, plant residues should be evenly incorporated in the surface soil or burned. Breakdown of aminopyralid in plant residues or manure is more rapid under warm, moist soil conditions and may be accelerated by supplemental irrigation.

CROP ROTATION

- DO NOT rotate non-cropland to cropland for one year following an application of Malibu™ Plus D. Cereals and corn can be planted one year after treatment. Most broadleaf crops are more sensitive and can require at least 2 years depending on the crop and environmental conditions.
- DO NOT plant forage legumes until a soil bioassay has been conducted to determine if aminopyralid residues remaining in the soil will adversely affect the legume establishment.
- DO NOT plant a broadleaf crop until an adequately sensitive field bioassay shows that the level of aminopyralid present in the soil will not adversely affect that broadleaf crop.

PASTURE RESTRICTIONS

- The applicator must document that they have notified property owners/operators, or customers, in writing, of the compost and animal bedding/feed prohibitions within 14 days of the application. Applicators must keep the records of notification for two years. Refer to label for record-keeping and notification requirements.
- Trees adjacent to or in a treated area can occasionally be affected by root uptake of Malibu Plus D through movement into the soil. DO NOT apply Malibu Plus D within the root zone of desirable trees unless such injury can be tolerated. Use special caution near roses, and leguminous trees such as locusts, redbud, mimosa, and caragana.



◀ See label for complete application guidelines and restrictions.

©2026 Albaugh, LLC. All rights reserved. Albaugh and the Albaugh logo are registered trademarks and Malibu is a trademark of Albaugh, LLC. Always read and follow label restrictions, precautions and directions for use. Some products may not be registered for sale or use in all states or counties. Please check with your local extension service to ensure registration status.