

ALGAECIDE

# COLONEL™ XTR

FOR CONTROL OF ALL TYPES OF AQUEOUS ALGAE.



Colonel™ XTR delivers simple, efficient control of all types of aqueous algae. The formulation penetrates algae cells, delivering more product to the target area to control algae from the inside out. Applicators familiar with traditional, sulfate-based algae-control products will note improved efficacy with Colonel XTR.

## PRODUCT FEATURES

- Chelated copper to guard against mineral antagonism in water.
- Improved copper uptake.
- Rapid control response within a few days of application.
- Labeled for control of all species of aqueous algae.

## LABELED USES

- Golf courses
- Ponds
- Ornamentals
- Fish hatcheries
- Irrigation
- Potable water reservoirs
- Fire ponds
- Non-crop irrigation and drainage systems
- Fresh water lakes
- Chemigation systems

See label for complete application guidelines and restrictions.

### ACTIVE INGREDIENTS

Copper ethanolamine complex

### HRAC GROUP

N/A

### FORMULATION

Liquid concentrate

### CHEMICAL FAMILY

None

### COMPARE TO

Captain® XTR

### MODE OF ACTION

Photosynthesis disruption

### RESTRICTED USE

No

### SIGNAL WORD

Danger

### PACKAGING

2 x 2.5 gal, 265 gal tote

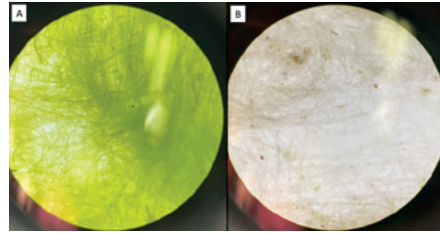
### EPA REG NUMBER

89442-70

# COLONEL™ XTR

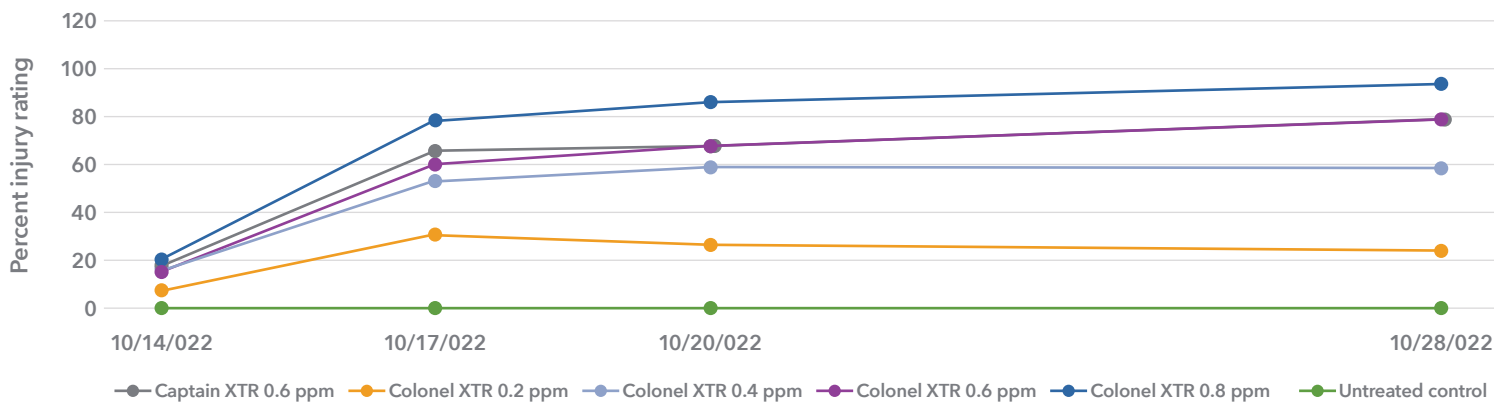
FOR CONTROL OF ALL TYPES OF AQUEOUS ALGAE.

Excessive filamentous algae growth can be detrimental to water quality. Algae blooms can create large swings in dissolved oxygen and pH, along with reduced light penetration into water bodies. People can also be negatively impacted by unsightly conditions, impeded recreational uses, and in severe cases toxicity to humans and pets.

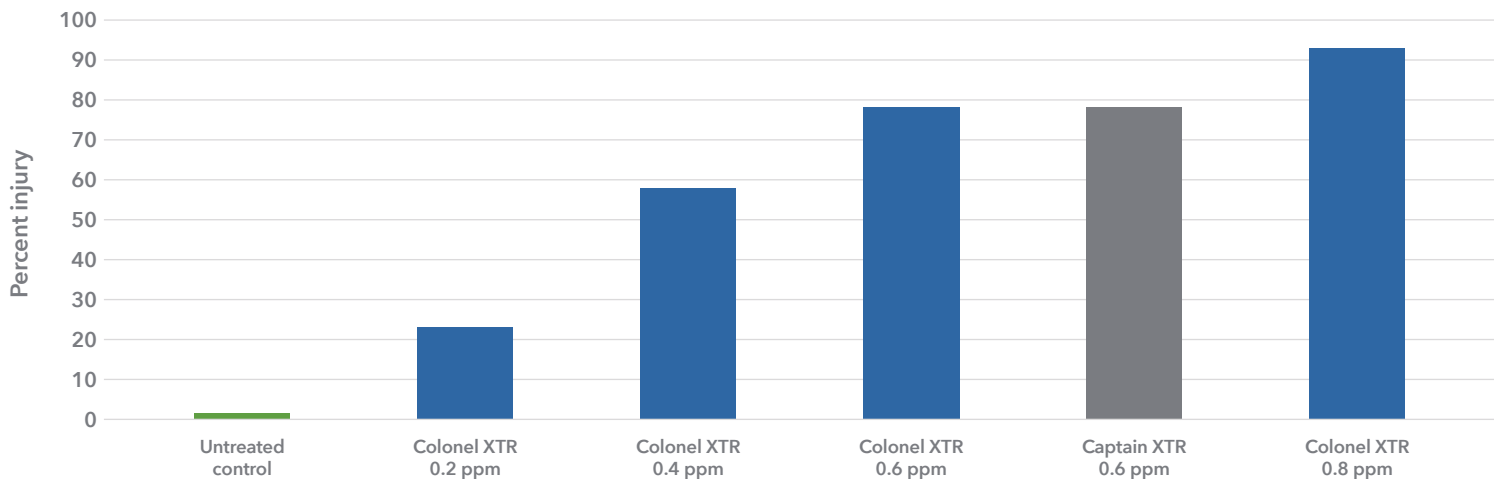


Filamentous algae before (A) and after (B) treatment w/ 0.8 ppm Colonel XTR.

## Filamentous algae control w/ Colonel XTR



## Filamentous algae injury 15 DAT



◀ See label for complete application guidelines and restrictions.

©2026 Albaugh, LLC. All rights reserved. Albaugh and the A logo are registered trademarks and Colonel is a trademark of Albaugh, LLC. Captain is a registered trademark of SePRO Corporation. Always read and follow label restrictions, precautions, and directions for use. Product may not be registered for sale or use in all states or counties. Please check with your state agency responsible for pesticide registration to ensure registration status.